

CERA-CHEK™ 1Code

Blood Glucose Monitoring System

BIG STRIP

EASY GRIP

HYGIENIC



QUICK GUIDE



www.greencrossms.com

CERA-CHEK™ 1Code Blood Glucose Test Meter

Absorbent Hole

Touch blood drop here.

Confirmation Window

Enable to confirm enough blood applied to the absorbent hole of the test strip.

Indicator Light

Turn the light on when you insert the test strip. (Require setting)

Power Button

Turn the meter on or off and sets options.

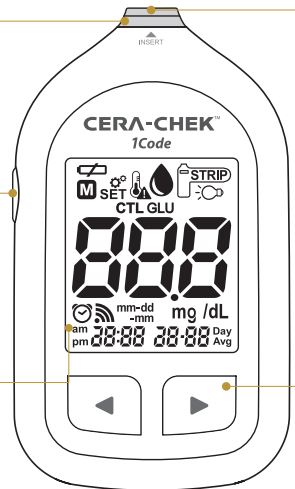
Display

Show test results, messages and other relevant information.



Grip

Hold this part to insert or remove the test strip.



Insert Port

Insert test strip here.

Setting Buttons (◀▶)

Recall previous test results from the memory / adjust settings.

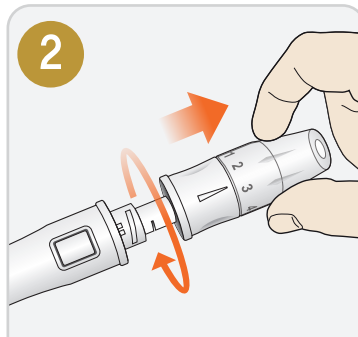
CERA-CHEK™ 1Code Blood Glucose Tests



1

Wash your hands.

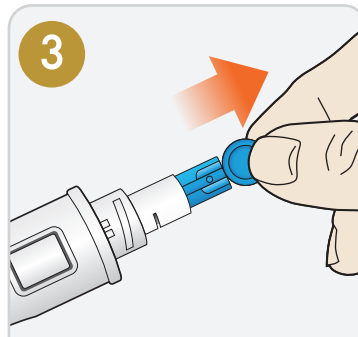
Make sure your hands are clean and dry.



2

Remove the lancing device cap.

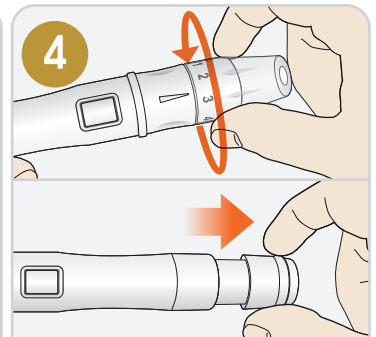
Screw off the lancing device cap.



3

Insert a lancet, remove the protective cap.

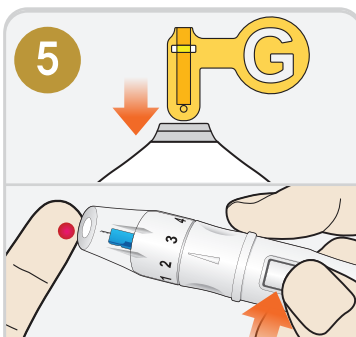
Insert a lancet into the lancet holder. Twist off and set aside the protective cap.



4

Adjust the strength of the lancing device and pull back on the slider.

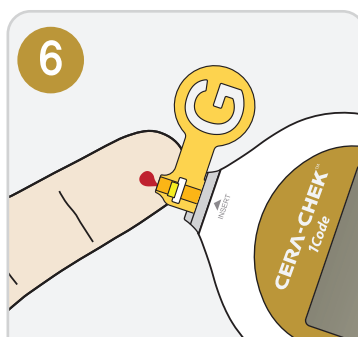
Close the lancing device cap. Twist the adjustable cap to adjust the depth. (1~3 : soft skin / 4-5 : thick skin) Pull back on the slider until it clicks.



5

Insert test strip / Prick your fingertip.

Insert the test strip into the insert port. Prick your finger with the lancing device.



6

Touch blood drop to absorbent hole.

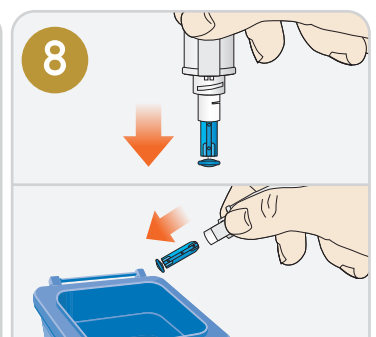
Make sure the blood completely filled on the confirmation window.



7

Obtain a result.

The result is shown on the display in 5 seconds.

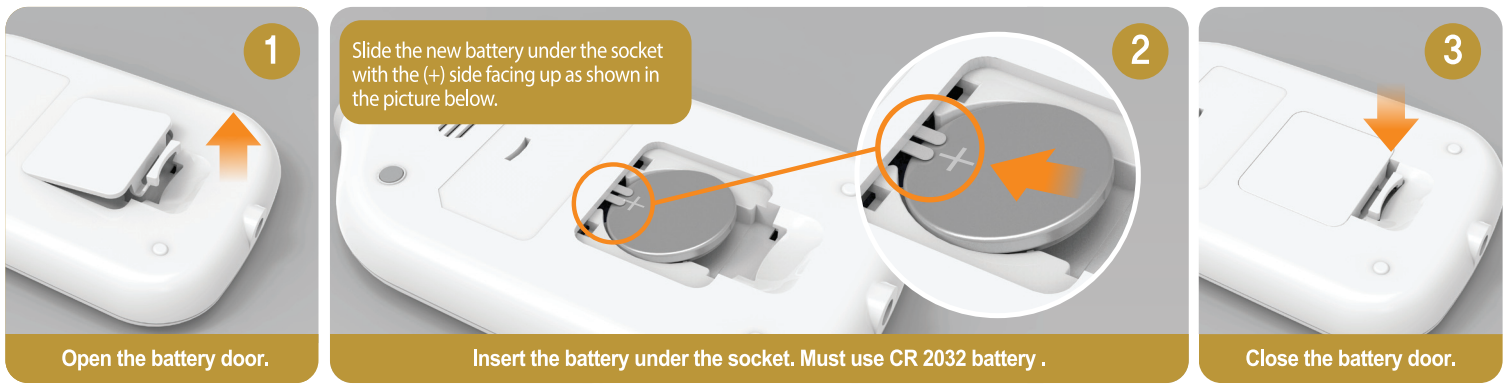


8

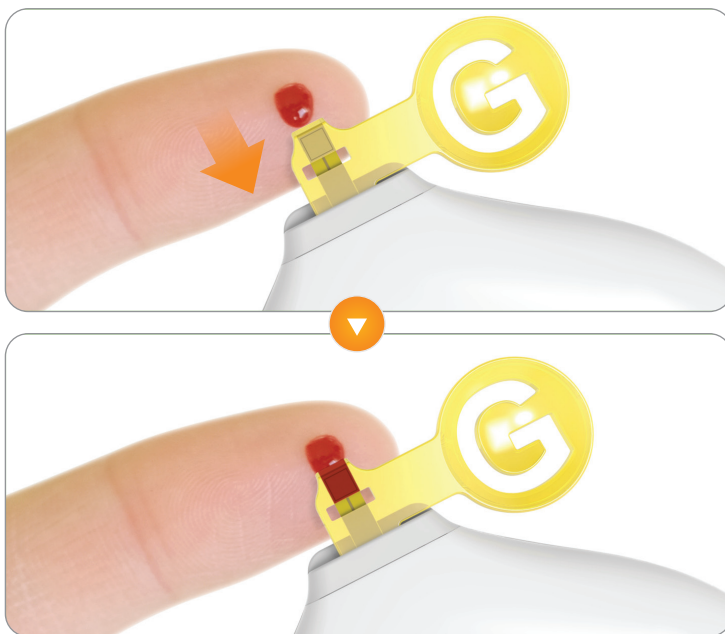
Discard the lancet and strip.

Discard the used lancet and strip immediately.

How to replace the battery



How to touch the blood drop



If the applied blood amount is lower than $0.5\mu\text{l}$, the measured value may be low or you may not be able to obtain accurate results.

Diabetic blood glucose levels

	Condition	Glucose range
Recommendation for someone with diabetes	Fasting	80 – 130 mg/dL (4.4 - 7.2 mmol/L)
	1 to 2 hours after meals	<180 mg/dL (10.0 mmol/L)

※ Source: American Diabetes Association: Diabetes Care, January 2021, Volume 44, SUPPLEMENT 1

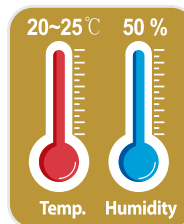


Manufactured by GREEN CROSS MEDIS CORP.
Distributed by GREEN CROSS MEDICAL SCIENCE CORP.
H.Q. : 107, Ihyeon-ro 30beon-gil, Giheung-gu, Yongin-si, Gyeonggi-do, 16924, Republic of Korea

Made in Korea

G40MM2C01 (02/22)

Storage precaution



Recommended storage condition

Ambient temperature : 20-25°C
Humidity : Less than 50%



Immediately close the bottle cap tightly after taking out the test strip

Improper storage will deteriorate the test strip, and the deteriorated test strip will show a high result. Sometimes, the low result may occur for improper test strip storage.

Error messages and Troubleshooting

	Meaning	Action required
Lo	The test result level is less than 10mg/dL (0.6mmol/L) or the blood volume is less than 0.5 μl .	Repeat the test with a new test strip. If the same result is obtained after the retest, please contact your local distributor.
	Test strip was exposed to moisture or stored outside the test strip bottle.	Test strip was exposed to moisture or stored outside the test strip bottle.
E-1	Blood was applied before inserting the strip.	Please insert the strip into the Insert Port before touching the blood drop.
	Test strip was exposed to moisture or stored outside the test strip bottle.	Testing with new test strip in the unopened test strip bottle.
	Test strip is reused.	Repeat the test with a new test strip.



Please scan the QR code to watch how-to-use CERA-CHEK™ 1Code.

<https://youtu.be/Nh-kUueXjvE>